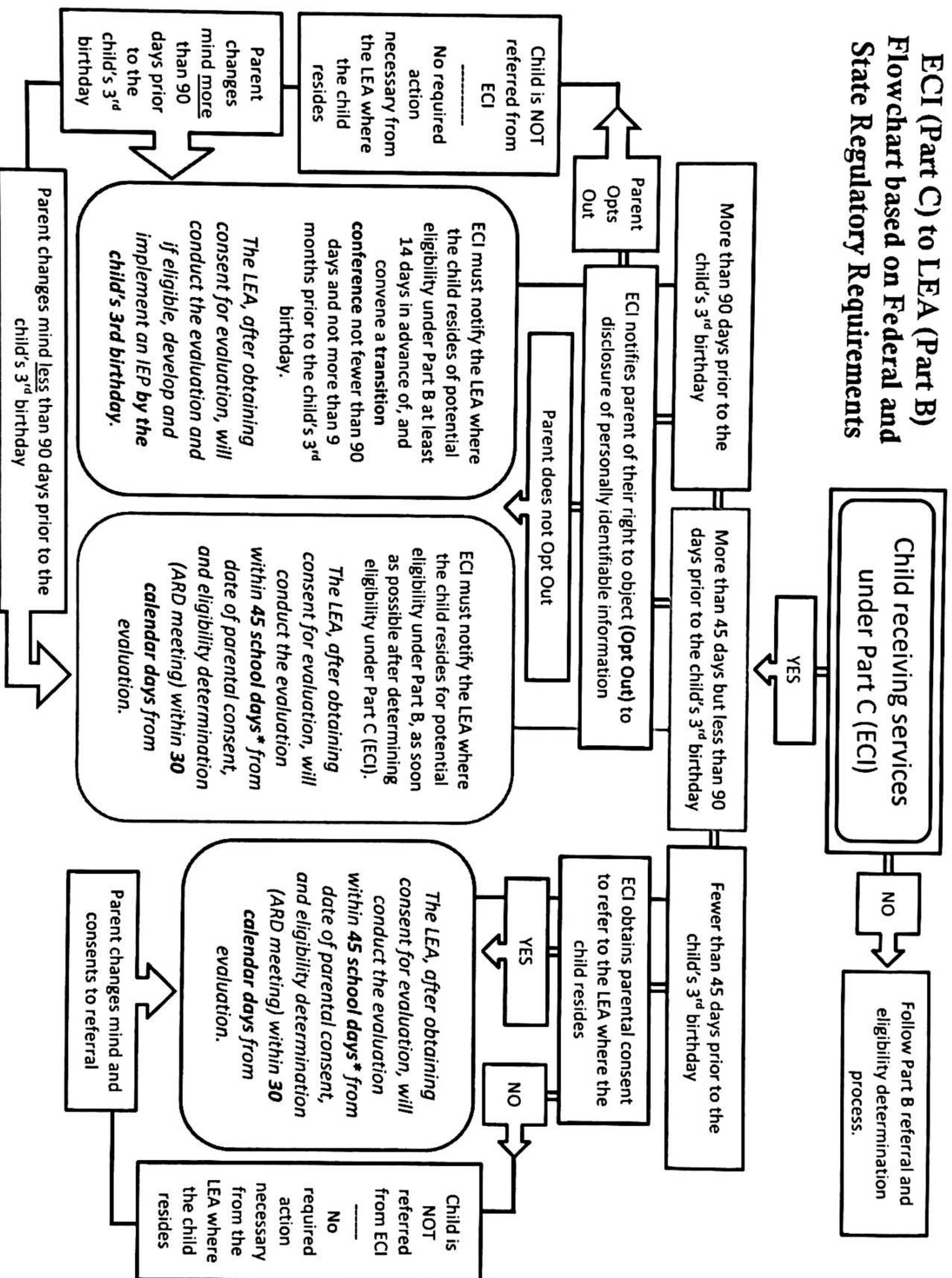


# ECI (Part C) to LEA (Part B) Flowchart based on Federal and State Regulatory Requirements



\* In accordance with current State established initial evaluation timelines.



**Early Childhood Interventions-Part C (ECI) to Local Education Agency-Part B (LEA)  
Accessible Flowchart based on Federal and State Regulatory Requirements**

**Question one:**

**Is the child receiving services under ECI-Part C?**

- If no, follow LEA-Part B referral and eligibility determination processes found in section five.
- If yes, continue to question two.

**Question two:**

**How long has the child received services under ECI-Part C?**

- If fewer than 45 days prior to the child's third birthday, continue to question three.
- If more than 90 days prior to the child's third birthday, follow directions found in section one.
- If more than 45 days but less than 90 days prior to the child's third birthday, follow directions found in section two.

**Question three:**

**Did ECI obtain parental consent to refer to the local education agency where the child resides?**

- If yes, follow directions found in section three.
- If no, the child is not referred from ECI and no required action is necessary from the LEA where the child resides. If the parent changes their mind and consents to referral, follow directions found in section three.

**Section One:**

**The child has received services under ECI- Part C more than 90 days prior to the child's third birthday.**

- ECI notifies the parent of their right to object (opt out) to disclosures of personally identifiable information.
- If parent opts out, proceed to section four.
- If parent does not opt out, ECI must notify the LEA where the child resides for potential eligibility under Part B at least 14 days in advance of, and convene a transition conference not fewer than 90 days and not more than 9 months prior to the child's third birthday.
- The LEA, after obtaining consent for evaluation, will conduct the evaluation and if eligible, develop and implement an IEP by the child's third birthday. The LEA will make eligibility determination at an admission review and dismissal (ARD) committee meeting.

**Section Two:**

**The child has received services under ECI-Part C more than 45 days but less than 90 days prior to the child's third birthday.**

- ECI notifies the parent of their right to object (opt out) to disclosures of personally identifiable information.
- If parent opts out, proceed to section four
- If parent does not opt out, ECI must notify the LEA where the child resides for potential eligibility under Part B as soon as possible after determining eligibility under Part C.
- The LEA, after obtaining consent for evaluation, will conduct the evaluation within 45 school days, in accordance with current State established initial evaluation timelines, from the date of parental consent. The LEA will make eligibility determination at an admission review and dismissal (ARD) committee meeting within 30 calendar days from the evaluation date.



**Section Three:**

The child has received services under ECI-Part C fewer than 45 days prior to the child's third birthday and ECI obtains parental consent to refer to the LEA where the child resides.

- The LEA, after obtaining consent for evaluation, will conduct the evaluation within 45 school days, in accordance with current State established initial evaluation timelines, from the date of parental consent. The LEA will make eligibility determination at an admission review and dismissal (ARD) committee meeting within 30 calendar days from the evaluation date.

**Section Four:**

Parent objects (opts out) to disclosure of personally identifiable information to the LEA.

- The child is not referred from ECI and no required action is necessary from the LEA where the child resides.
- If the parent changes their mind more than 90 days prior to the child's third birthday, the LEA, after obtaining consent for evaluation, will conduct the evaluation and if eligible, develop and implement an IEP by the child's third birthday. The LEA will make eligibility determination at an admission review and dismissal (ARD) committee meeting.
- If the parent changes their mind less than 90 days prior to the child's third birthday, the LEA, after obtaining consent for evaluation, will conduct the evaluation within 45 school days, in accordance with current State established initial evaluation timelines, from the date of parental consent. The LEA will make eligibility determination at an admission review and dismissal (ARD) committee meeting within 30 calendar days from the evaluation date.

**Section Five:**

Part B referral and eligibility determination process.

- The LEA, after obtaining consent for evaluation, will conduct the evaluation within 45 school days, in accordance with current State established initial evaluation timelines, from the date of parental consent. The LEA will make eligibility determination at an admission review and dismissal (ARD) committee meeting within 30 calendar days from the evaluation date.



**Health and Human Services Commission**  
**Early Childhood Intervention Services**  
**Family Monthly Maximum Payments Sliding Scale**  
**Effective July 1, 2019**

**Family Size = 2**

Adjusted Family Income	Monthly Maximum Payments	Relation to FPL
\$16,910 or under	\$0	≤ 100%
\$16,911 - \$25,365	\$5	> 100% to ≤ 150%
\$25,366 - \$33,820	\$14	> 150% to ≤ 200%
\$33,821 - \$42,275	\$28	> 200% to ≤ 250%
\$42,276 - \$50,730	\$45	> 250% to ≤ 300%
\$50,731 - \$59,185	\$67	> 300% to ≤ 350%
\$59,186 - \$67,640	\$124	> 350% to ≤ 400%
\$67,641 - \$76,095	\$210	> 400% to ≤ 450%
\$76,096 - \$84,550	\$313	> 450% to ≤ 500%
\$84,551 - \$93,005	\$433	> 500% to ≤ 550%
\$93,006 - \$101,460	\$474	> 550% to ≤ 600%
\$101,461 - \$109,915	\$515	> 600% to ≤ 650%
\$109,916 - \$118,370	\$557	> 650% to ≤ 700%
\$118,371 - \$126,825	\$598	> 700% to ≤ 750%
\$126,826 - \$135,280	\$639	> 750% to ≤ 800%
\$135,281 - \$143,735	\$680	> 800% to ≤ 850%
\$143,736 - \$152,190	\$722	> 850% to ≤ 900%
\$152,191 - \$160,645	\$763	> 900% to ≤ 950%
\$160,646 - \$169,100	\$804	> 950% to ≤ 1000%
\$169,101 or over	the full cost of services	> 1000%

**Family Size = 3**

Adjusted Family Income	Monthly Maximum Payments	Relation to FPL
\$21,330 or under	\$0	≤ 100%
\$21,331 - \$31,995	\$5	> 100% to ≤ 150%
\$31,996 - \$42,660	\$14	> 150% to ≤ 200%
\$42,661 - \$53,325	\$28	> 200% to ≤ 250%
\$53,326 - \$63,990	\$45	> 250% to ≤ 300%
\$63,991 - \$74,655	\$67	> 300% to ≤ 350%
\$74,656 - \$85,320	\$124	> 350% to ≤ 400%
\$85,321 - \$95,985	\$210	> 400% to ≤ 450%
\$95,986 - \$106,650	\$313	> 450% to ≤ 500%
\$106,651 - \$117,315	\$433	> 500% to ≤ 550%
\$117,316 - \$127,980	\$474	> 550% to ≤ 600%
\$127,981 - \$138,645	\$515	> 600% to ≤ 650%
\$138,646 - \$149,310	\$557	> 650% to ≤ 700%
\$149,311 - \$159,975	\$598	> 700% to ≤ 750%
\$159,976 - \$170,640	\$639	> 750% to ≤ 800%
\$170,641 - \$181,305	\$680	> 800% to ≤ 850%
\$181,306 - \$191,970	\$722	> 850% to ≤ 900%
\$191,971 - \$202,635	\$763	> 900% to ≤ 950%
\$202,636 - \$213,300	\$804	> 950% to ≤ 1000%
\$213,301 or over	the full cost of services	> 1000%

**Family Size = 4**

Adjusted Family Income	Monthly Maximum Payments	Relation to FPL
\$25,750 or under	\$0	≤ 100%
\$25,751 - \$38,625	\$5	> 100% to ≤ 150%
\$38,626 - \$51,500	\$14	> 150% to ≤ 200%
\$51,501 - \$64,375	\$28	> 200% to ≤ 250%
\$64,376 - \$77,250	\$45	> 250% to ≤ 300%
\$77,251 - \$90,125	\$67	> 300% to ≤ 350%
\$90,126 - \$103,000	\$124	> 350% to ≤ 400%
\$103,001 - \$115,875	\$210	> 400% to ≤ 450%
\$115,876 - \$128,750	\$313	> 450% to ≤ 500%
\$128,751 - \$141,625	\$433	> 500% to ≤ 550%
\$141,626 - \$154,500	\$474	> 550% to ≤ 600%
\$154,501 - \$167,375	\$515	> 600% to ≤ 650%
\$167,376 - \$180,250	\$557	> 650% to ≤ 700%
\$180,251 - \$193,125	\$598	> 700% to ≤ 750%
\$193,126 - \$206,000	\$639	> 750% to ≤ 800%
\$206,001 - \$218,875	\$680	> 800% to ≤ 850%
\$218,876 - \$231,750	\$722	> 850% to ≤ 900%
\$231,751 - \$244,625	\$763	> 900% to ≤ 950%
\$244,626 - \$257,500	\$804	> 950% to ≤ 1000%
\$257,501 or over	the full cost of services	> 1000%

**Family Size = 5**

Adjusted Family Income	Monthly Maximum Payments	Relation to FPL
\$30,170 or under	\$0	≤ 100%
\$30,171 - \$45,255	\$5	> 100% to ≤ 150%
\$45,256 - \$60,340	\$14	> 150% to ≤ 200%
\$60,341 - \$75,425	\$28	> 200% to ≤ 250%
\$75,426 - \$90,510	\$45	> 250% to ≤ 300%
\$90,511 - \$105,595	\$67	> 300% to ≤ 350%
\$105,596 - \$120,680	\$124	> 350% to ≤ 400%
\$120,681 - \$135,765	\$210	> 400% to ≤ 450%
\$135,766 - \$150,850	\$313	> 450% to ≤ 500%
\$150,851 - \$165,935	\$433	> 500% to ≤ 550%
\$165,936 - \$181,020	\$474	> 550% to ≤ 600%
\$181,021 - \$196,105	\$515	> 600% to ≤ 650%
\$196,106 - \$211,190	\$557	> 650% to ≤ 700%
\$211,191 - \$226,275	\$598	> 700% to ≤ 750%
\$226,276 - \$241,360	\$639	> 750% to ≤ 800%
\$241,361 - \$256,445	\$680	> 800% to ≤ 850%
\$256,446 - \$271,530	\$722	> 850% to ≤ 900%
\$271,531 - \$286,615	\$763	> 900% to ≤ 950%
\$286,616 - \$301,700	\$804	> 950% to ≤ 1000%
\$301,701 or over	the full cost of services	> 1000%



**Health and Human Services Commission**  
**Early Childhood Intervention Services**  
**Family Monthly Maximum Payments Sliding Scale**  
**Effective July 1, 2019**

**Family Size = 6**

Adjusted Family Income	Monthly Maximum Payments	Relation to FPL
\$34,590 or under	\$0	≤ 100%
\$34,591 - \$51,885	\$5	> 100% to ≤ 150%
\$51,886 - \$69,180	\$14	> 150% to ≤ 200%
\$69,181 - \$86,475	\$28	> 200% to ≤ 250%
\$86,476 - \$103,770	\$45	> 250% to ≤ 300%
\$103,771 - \$121,065	\$67	> 300% to ≤ 350%
\$121,066 - \$138,360	\$124	> 350% to ≤ 400%
\$138,361 - \$155,655	\$210	> 400% to ≤ 450%
\$155,656 - \$172,950	\$313	> 450% to ≤ 500%
\$172,951 - \$190,245	\$433	> 500% to ≤ 550%
\$190,246 - \$207,540	\$474	> 550% to ≤ 600%
\$207,541 - \$224,835	\$515	> 600% to ≤ 650%
\$224,836 - \$242,130	\$557	> 650% to ≤ 700%
\$242,131 - \$259,425	\$598	> 700% to ≤ 750%
\$259,426 - \$276,720	\$639	> 750% to ≤ 800%
\$276,721 - \$294,015	\$680	> 800% to ≤ 850%
\$294,016 - \$311,310	\$722	> 850% to ≤ 900%
\$311,311 - \$328,605	\$763	> 900% to ≤ 950%
\$328,606 - \$345,900	\$804	> 950% to ≤ 1000%
\$345,901 or over	the full cost of services	> 1000%

**Family Size = 7**

Adjusted Family Income	Monthly Maximum Payments	Relation to FPL
\$39,010 or under	\$0	≤ 100%
\$39,011 - \$58,515	\$5	> 100% to ≤ 150%
\$58,516 - \$78,020	\$14	> 150% to ≤ 200%
\$78,021 - \$97,525	\$28	> 200% to ≤ 250%
\$97,526 - \$117,030	\$45	> 250% to ≤ 300%
\$117,031 - \$136,535	\$67	> 300% to ≤ 350%
\$136,536 - \$156,040	\$124	> 350% to ≤ 400%
\$156,041 - \$175,545	\$210	> 400% to ≤ 450%
\$175,546 - \$195,050	\$313	> 450% to ≤ 500%
\$195,051 - \$214,555	\$433	> 500% to ≤ 550%
\$214,556 - \$234,060	\$474	> 550% to ≤ 600%
\$234,061 - \$253,565	\$515	> 600% to ≤ 650%
\$253,566 - \$273,070	\$557	> 650% to ≤ 700%
\$273,071 - \$292,575	\$598	> 700% to ≤ 750%
\$292,576 - \$312,080	\$639	> 750% to ≤ 800%
\$312,081 - \$331,585	\$680	> 800% to ≤ 850%
\$331,586 - \$351,090	\$722	> 850% to ≤ 900%
\$351,091 - \$370,595	\$763	> 900% to ≤ 950%
\$370,596 - \$390,100	\$804	> 950% to ≤ 1000%
\$390,101 or over	the full cost of services	> 1000%

**Family Size = 8**

Adjusted Family Income	Monthly Maximum Payments	Relation to FPL
\$43,430 or under	\$0	≤ 100%
\$43,431 - \$65,145	\$5	> 100% to ≤ 150%
\$65,146 - \$86,860	\$14	> 150% to ≤ 200%
\$86,861 - \$108,575	\$28	> 200% to ≤ 250%
\$108,576 - \$130,290	\$45	> 250% to ≤ 300%
\$130,291 - \$152,005	\$67	> 300% to ≤ 350%
\$152,006 - \$173,720	\$124	> 350% to ≤ 400%
\$173,721 - \$195,435	\$210	> 400% to ≤ 450%
\$195,436 - \$217,150	\$313	> 450% to ≤ 500%
\$217,151 - \$238,865	\$433	> 500% to ≤ 550%
\$238,866 - \$260,580	\$474	> 550% to ≤ 600%
\$260,581 - \$282,295	\$515	> 600% to ≤ 650%
\$282,296 - \$304,010	\$557	> 650% to ≤ 700%
\$304,011 - \$325,725	\$598	> 700% to ≤ 750%
\$325,726 - \$347,440	\$639	> 750% to ≤ 800%
\$347,441 - \$369,155	\$680	> 800% to ≤ 850%
\$369,156 - \$390,870	\$722	> 850% to ≤ 900%
\$390,871 - \$412,585	\$763	> 900% to ≤ 950%
\$412,586 - \$434,300	\$804	> 950% to ≤ 1000%
\$434,301 or over	the full cost of services	> 1000%

**Family Size = 9**

Adjusted Family Income	Monthly Maximum Payments	Relation to FPL
\$47,850 or under	\$0	≤ 100%
\$47,851 - \$71,775	\$5	> 100% to ≤ 150%
\$71,776 - \$95,700	\$14	> 150% to ≤ 200%
\$95,701 - \$119,625	\$28	> 200% to ≤ 250%
\$119,626 - \$143,550	\$45	> 250% to ≤ 300%
\$143,551 - \$167,475	\$67	> 300% to ≤ 350%
\$167,476 - \$191,400	\$124	> 350% to ≤ 400%
\$191,401 - \$215,325	\$210	> 400% to ≤ 450%
\$215,326 - \$239,250	\$313	> 450% to ≤ 500%
\$239,251 - \$263,175	\$433	> 500% to ≤ 550%
\$263,176 - \$287,100	\$474	> 550% to ≤ 600%
\$287,101 - \$311,025	\$515	> 600% to ≤ 650%
\$311,026 - \$334,950	\$557	> 650% to ≤ 700%
\$334,951 - \$358,875	\$598	> 700% to ≤ 750%
\$358,876 - \$382,800	\$639	> 750% to ≤ 800%
\$382,801 - \$406,725	\$680	> 800% to ≤ 850%
\$406,726 - \$430,650	\$722	> 850% to ≤ 900%
\$430,651 - \$454,575	\$763	> 900% to ≤ 950%
\$454,576 - \$478,500	\$804	> 950% to ≤ 1000%
\$478,501 or over	the full cost of services	> 1000%

To calculate the adjusted family income range for each maximum payment for family size more than 9, add \$4420 for each additional person for each 100% of federal poverty level (FPL).





TEXAS

Health and Human  
Services

Early Childhood  
Intervention

Brighton ECI: 210.826.4492  
CHCS ECI: 210.261-3300  
Easter Seals ECI: 210.614.3911

## Early Childhood Intervention Checklist

This checklist is used to determine if an infant or toddler, birth to 3 years of age has a condition or concern that may make the child eligible for Early Childhood Intervention (ECI) services.

Child's Name: \_\_\_\_\_ Date of Birth: \_\_\_\_\_ Age: \_\_\_\_\_

This checklist includes some but not all of the conditions or concerns that may make a child eligible for ECI. If a child has any concerns or medical diagnosis that has a high probability of being associated with a developmental delay, the child should be referred for ECI services.

Identified Conditions	<p><input type="checkbox"/> Child has a known medical diagnosis: _____</p> <p>For a list of qualifying medical diagnoses, please go to: <a href="http://www.dars.state.tx.us/ecis/resources/diagnoses.asp">www.dars.state.tx.us/ecis/resources/diagnoses.asp</a></p>		
Developmental Concerns	<p>(See Developmental Checklist on Back)</p> <ul style="list-style-type: none"> <li><input type="checkbox"/> Cognitive Concerns</li> <li><input type="checkbox"/> Fine Motor Concerns</li> <li><input type="checkbox"/> Gross Motor Concerns</li> <li><input type="checkbox"/> Speech Concerns</li> <li><input type="checkbox"/> Social/Emotional Concerns</li> <li><input type="checkbox"/> Self-Help Concerns</li> <li><input type="checkbox"/> Other (please explain): _____</li> </ul>		
Red Flags	<table border="0"> <tr> <td> <ul style="list-style-type: none"> <li><input type="checkbox"/> Drug Exposure</li> <li><input type="checkbox"/> Difficulty/ inability to lift head</li> <li><input type="checkbox"/> Fisted hands</li> <li><input type="checkbox"/> Stiff body</li> <li><input type="checkbox"/> Poor use of arms</li> <li><input type="checkbox"/> Arches back</li> <li><input type="checkbox"/> Will not put weight on legs</li> <li><input type="checkbox"/> Walks on toes</li> <li><input type="checkbox"/> Uses only one side of body to move</li> <li><input type="checkbox"/> Body rocking</li> </ul> </td> <td> <ul style="list-style-type: none"> <li><input type="checkbox"/> Poor eye contact</li> <li><input type="checkbox"/> Clumsy</li> <li><input type="checkbox"/> Aggressive</li> <li><input type="checkbox"/> Doesn't seek adult attention</li> <li><input type="checkbox"/> Short attention span for interesting activities</li> <li><input type="checkbox"/> Doesn't play with other children</li> <li><input type="checkbox"/> Difficulty with transitions</li> <li><input type="checkbox"/> Excessive Drooling</li> <li><input type="checkbox"/> Not babbling</li> </ul> </td> </tr> </table>	<ul style="list-style-type: none"> <li><input type="checkbox"/> Drug Exposure</li> <li><input type="checkbox"/> Difficulty/ inability to lift head</li> <li><input type="checkbox"/> Fisted hands</li> <li><input type="checkbox"/> Stiff body</li> <li><input type="checkbox"/> Poor use of arms</li> <li><input type="checkbox"/> Arches back</li> <li><input type="checkbox"/> Will not put weight on legs</li> <li><input type="checkbox"/> Walks on toes</li> <li><input type="checkbox"/> Uses only one side of body to move</li> <li><input type="checkbox"/> Body rocking</li> </ul>	<ul style="list-style-type: none"> <li><input type="checkbox"/> Poor eye contact</li> <li><input type="checkbox"/> Clumsy</li> <li><input type="checkbox"/> Aggressive</li> <li><input type="checkbox"/> Doesn't seek adult attention</li> <li><input type="checkbox"/> Short attention span for interesting activities</li> <li><input type="checkbox"/> Doesn't play with other children</li> <li><input type="checkbox"/> Difficulty with transitions</li> <li><input type="checkbox"/> Excessive Drooling</li> <li><input type="checkbox"/> Not babbling</li> </ul>
<ul style="list-style-type: none"> <li><input type="checkbox"/> Drug Exposure</li> <li><input type="checkbox"/> Difficulty/ inability to lift head</li> <li><input type="checkbox"/> Fisted hands</li> <li><input type="checkbox"/> Stiff body</li> <li><input type="checkbox"/> Poor use of arms</li> <li><input type="checkbox"/> Arches back</li> <li><input type="checkbox"/> Will not put weight on legs</li> <li><input type="checkbox"/> Walks on toes</li> <li><input type="checkbox"/> Uses only one side of body to move</li> <li><input type="checkbox"/> Body rocking</li> </ul>	<ul style="list-style-type: none"> <li><input type="checkbox"/> Poor eye contact</li> <li><input type="checkbox"/> Clumsy</li> <li><input type="checkbox"/> Aggressive</li> <li><input type="checkbox"/> Doesn't seek adult attention</li> <li><input type="checkbox"/> Short attention span for interesting activities</li> <li><input type="checkbox"/> Doesn't play with other children</li> <li><input type="checkbox"/> Difficulty with transitions</li> <li><input type="checkbox"/> Excessive Drooling</li> <li><input type="checkbox"/> Not babbling</li> </ul>		
Other Concerns	<ul style="list-style-type: none"> <li><input type="checkbox"/> Behavior concerns (please explain): _____ _____</li> <li><input type="checkbox"/> Feeding concerns (please explain): _____ _____</li> <li><input type="checkbox"/> Parental Concerns (please explain): _____ _____</li> </ul>		



## Developmental Checklist

*Developed from Child Development Chart- Harold Ireton, Ph.D. and Texas Child Care/ Summer 1993*

Age	Cognition	Fine Motor	Gross Motor	Language	Social	Self-Help
0-6 mo	<ul style="list-style-type: none"> <li>• Pays attention to caregivers face</li> <li>• Eyes locate sound</li> <li>• Recognizes bottle</li> <li>• Searches for objects</li> </ul>	<ul style="list-style-type: none"> <li>• Looks at and reaches for faces and toys</li> <li>• Takes hand to mouth</li> <li>• Picks up toy with one hand</li> <li>• Swipes at toy</li> </ul>	<ul style="list-style-type: none"> <li>• Lifts head and chest when lying on stomach</li> <li>• Takes some weight on legs when s</li> <li>• Takes feet to mouth</li> </ul>	<ul style="list-style-type: none"> <li>• Vocalizes, coos</li> <li>• Reacts to sound</li> <li>• Babbles</li> <li>• Vocalizes spontaneously</li> <li>• Recognizes own name</li> </ul>	<ul style="list-style-type: none"> <li>• Smiles and coos</li> <li>• Quiets when picked up</li> <li>• Likes Peek-a-boo</li> <li>• Smiles at self in mirror</li> <li>• Distinguishes mother from others</li> </ul>	<ul style="list-style-type: none"> <li>• Sucks well</li> <li>• Reacts to bottle</li> <li>• Comforts self with thumb or pacifier</li> <li>• Stretches arms to be picked up</li> </ul>
6-9 mo	<ul style="list-style-type: none"> <li>• Imitates actions</li> <li>• Will repeat action (will hide for peek-a-boo)</li> <li>• Laughs</li> <li>• Looks at pictures</li> </ul>	<ul style="list-style-type: none"> <li>• Transfers toy from one hand to the other</li> <li>• Picks up small object with several fingers and thumb</li> </ul>	<ul style="list-style-type: none"> <li>• Rolls from back to stomach</li> <li>• Sits by propping forward on arms</li> <li>• Begins to pull to stand at furniture</li> <li>• Sits alone</li> </ul>	<ul style="list-style-type: none"> <li>• Responds to name</li> <li>• Recognizes mama and dada</li> <li>• Waves bye-bye</li> <li>• Complex babbling of many sounds strung together</li> </ul>	<ul style="list-style-type: none"> <li>• Reaches for familiar person</li> <li>• Shows mild to severe separation anxiety</li> <li>• Pushes things away they don't want</li> </ul>	<ul style="list-style-type: none"> <li>• Feeds self cracker</li> <li>• Holds, bites and chews food</li> <li>• Holds bottle</li> </ul>
9-12 mo	<ul style="list-style-type: none"> <li>• Laughs aloud in play</li> <li>• Begins to understand "NO"</li> <li>• Finds hidden objects</li> <li>• Puts objects in/out</li> <li>• Gives toys to others</li> </ul>	<ul style="list-style-type: none"> <li>• Picks up small objects- precise thumb and finger grasp</li> <li>• Points with index finger</li> </ul>	<ul style="list-style-type: none"> <li>• Crawls well</li> <li>• Sits well with no support</li> <li>• Moves in and out of sitting position</li> <li>• Walks around furniture while holding on</li> </ul>	<ul style="list-style-type: none"> <li>• Says mama and dada</li> <li>• Imitates speech sounds: tongue clicking, lip smacking, coughing</li> <li>• Says "hi" and "bye"</li> </ul>	<ul style="list-style-type: none"> <li>• Plays social games: peek-a-boo, bye-bye, patty-cake</li> <li>• Reaches for familiar person</li> <li>• Likes an audience</li> </ul>	<ul style="list-style-type: none"> <li>• Picks up spoon by the handle</li> <li>• Cooperates in dressing</li> <li>• Drinks from cup</li> </ul>
12-18 mo	<ul style="list-style-type: none"> <li>• Imitates other children</li> <li>• Starts turn-taking</li> <li>• Follows one step requests</li> <li>• Imitates grown-ups actions</li> </ul>	<ul style="list-style-type: none"> <li>• Stacks two or more blocks</li> <li>• Picks up two small toys in one hand</li> <li>• Scribbles with crayon</li> </ul>	<ul style="list-style-type: none"> <li>• Stands without support</li> <li>• Walks without help</li> <li>• Runs</li> </ul>	<ul style="list-style-type: none"> <li>• Talks in single words</li> <li>• Asks for food or drink with words</li> <li>• Names 5-7 objects upon request</li> </ul>	<ul style="list-style-type: none"> <li>• Hugs toys and people</li> <li>• Laughs at things that are different from normal</li> <li>• Greets people with "hi"</li> </ul>	<ul style="list-style-type: none"> <li>• Feeds self with spoon</li> <li>• Insists on doing things by self</li> <li>• Cooperates with hair brushing and tooth brushing</li> </ul>
18-24 mo	<ul style="list-style-type: none"> <li>• Puts toys away on request</li> <li>• Interested in manipulative and constructive toys</li> <li>• Enjoys rhymes and singing</li> </ul>	<ul style="list-style-type: none"> <li>• Builds towers of four more blocks</li> <li>• Turns pages of picture books</li> <li>• Snips paper with scissors</li> <li>• Strings two or three beads</li> </ul>	<ul style="list-style-type: none"> <li>• Kicks ball forward</li> <li>• Runs well, seldom falls</li> <li>• Walks up and down stairs</li> <li>• Jumps</li> <li>• Squats in play</li> </ul>	<ul style="list-style-type: none"> <li>• Follows simple directions</li> <li>• Uses at least 10 words</li> <li>• Takes turns talking in conversation</li> <li>• Refers to self by name</li> </ul>	<ul style="list-style-type: none"> <li>• Parallel play</li> <li>• Shows sympathy to other children, comforts them</li> <li>• Shows anger or frustration</li> </ul>	<ul style="list-style-type: none"> <li>• Eats with fork</li> <li>• Eats well with spoon, minimum spill</li> <li>• Takes off open coat or shirt without help</li> <li>• Drinks from straw</li> <li>• Indicates pants are wet</li> </ul>
2-3 yrs	<ul style="list-style-type: none"> <li>• Pretends to talk on phone</li> <li>• Understands concept of one</li> <li>• Names one color</li> <li>• Recognizes self in picture</li> </ul>	<ul style="list-style-type: none"> <li>• Scribbles with circular motion</li> <li>• Draws or copies vertical lines</li> <li>• Cuts with small scissors</li> <li>• Builds with blocks</li> </ul>	<ul style="list-style-type: none"> <li>• Climbs on play equipment</li> <li>• Stands on one foot without support</li> <li>• Rides tricycle</li> </ul>	<ul style="list-style-type: none"> <li>• Uses two to three word phrases</li> <li>• Talks clearly, understood 75% of the time</li> <li>• Understands prepositions: in, on, under, beside</li> <li>• Uses no words: no, not, can't</li> <li>• Responds to who, what, where, when and why</li> </ul>	<ul style="list-style-type: none"> <li>• Helps with simple household tasks</li> <li>• Shares toys with other children</li> <li>• Plays well with other children</li> </ul>	<ul style="list-style-type: none"> <li>• Washes and dries hands</li> <li>• Dresses self with help</li> </ul>



# POTENTIAL FUNDING RESOURCES

## **Amy Young Barrier Removal**

One-Time Home Modification Grants

*Texas*

p: 512.936.7800

w: <http://www.tdhca.state.tx.us/htf/single-family/amy-young.htm>

## **Autism Cares**

Grants For Autism Spectrum Disorder during Crisis

w: <https://www.autismspeaks.org/AS-cares>

e: [familyservices@autismspeaks.org](mailto:familyservices@autismspeaks.org)

## **Be An Angel Fund**

Financial assistance for adaptive equipment and select services

*Houston, TX*

p: 281.219.3313

w: <http://www.beanangel.org>

## **Bright Steps Forward**

Grants, Sponsor a Child (Neurological Disorders)

*Fort Lauderdale, FL*

p: 877.NOW.ICAN

w: [www.brightstepsforward.org](http://www.brightstepsforward.org)

## **Children's Charity Fund**

Medical Grants, Educational Grants

*Sarasota, FL*

p: 1.800.643.5787

w: <http://www.childrenscharityfund.org/grants.html>

## **First Hand Foundation**

Financial Assistance (*one request per year*)

*Kansas City, MO*

p: 816.201.1569

w: <https://www.firsthandfoundation.org/request-funding/>

## **Gill Children's Services**

Medical/Dental, Prescriptions, Diapers, Summer School Tuition, and much more! (*Last resort financial assistance*)

*Forth Worth, TX*



p: 817.332.5070

w: [www.gillchildrens.org](http://www.gillchildrens.org)

**Kelly Brush Foundation**

Adaptive Sport & Recreation Equipment (SCI)

*South Burlington, VA*

p: 802.846.5298

w: <http://www.kellybrushfoundation.org/>

**Lexi Kazain Foundation**

Grants for Equipment

w: <http://www.helpingfromheaven.org/>

**Make-A-Wish Foundation**

Volunteer organization dedicated to fulfilling the wishes of children between the ages of 2½ - 18 who have been diagnosed with a life-threatening illness or disability.

p: 800-722-WISH (9474)

w: [www.wish.org](http://www.wish.org)

**Masonic Home and School of Texas**

Need Based Grants

*Hurst, TX*

p: 817.332.5070

w: [www.mhstx.org](http://www.mhstx.org)

**Medical Transportation Program**

**"Catch a Ride with Us"**

Those eligible for Medicaid or Children with Special Health Care Needs may qualify for this program, which pays for transportation costs (must call two days in advance for appointment).

p: 877.633.8747/ 800.735.2989

**Modest Needs**

Self Sufficiency Grant (*critical expenses*)

*New York, NY*

p: 212.463.7042

w: [www.modestneeds.org](http://www.modestneeds.org)

**M.O.R.G.A.N. Project**

Donated Medical Supplies/ Equipment



*Melbourne, FL*

w: [www.themorganproject.org](http://www.themorganproject.org)

**National Patient Travel HELPLINE**

Provides assistance and referral to the best source of charitable medical air transportation help.

p: 800.296.1217

w: [www.patienttravel.org](http://www.patienttravel.org)

**Prayer Child Foundation**

Small Grants

*Mesa, AZ*

p: 480.634.6086

w: [http://prayerchild.org/submit\\_request.html](http://prayerchild.org/submit_request.html)

**RxAssist**

Provides information on financial support organizations that help with the cost of prescriptions

w: [www.rxassist.org](http://www.rxassist.org)

**SSI (Supplemental Security Income)**

Children with disabilities qualify but there are strict financial guidelines and very few

p: 800.772.1213

w: [www.socialsecurity.gov](http://www.socialsecurity.gov)

**The Sunshine Foundation**

Grants special dreams to children, ages 3-18, who are chronically or seriously ill, physically challenged or abused

p: 800.767.1976

w: [www.sunshinefoundation.org](http://www.sunshinefoundation.org)

**Texas Elks Children's Services Inc.**

Grants for Equipment

*Texas*

w: <http://www.texaselks.org/TECSI.html>

**Travis Roy Foundation**

Grants for children with spinal cord injuries caused by accidents

*Boston, MA*

p: 617.619.8257

w: [www.travisroyfoundation.org](http://www.travisroyfoundation.org)



**United Health Care Children's Foundation**

**Medical Grants**

**p: 1.855.698.4223**

**w: [www.uhccf.org](http://www.uhccf.org)**